

INSTRUCTIONS FOR PROFESSIONAL RADON TEST KIT

The RTCA Professional Radon Test Kit is harmless and easy to use. If you follow the instructions, this test will provide an accurate measurement of the Radon gas concentration at the point of placement.

TO BEGIN TEST

1. On the back of the test information card please print the client name and test location address as you would want it to appear on the RTCA Radon Report. Also, on the back of the information card print your company name and phone number, email or fax number.
2. Using a pencil, fill in the information cells on the front of the card regarding the start date and time (fill in AM or PM), time zone, average indoor temperature, and the floor level in which the canister(s) is being placed. *See Figure 1*
3. Remove the lowest portion of the bar code label from the bottom of the canister and keep for your records. Then take the second bar code label and remove the paper backing and affix to the information card in the space provided. If you are performing side-by-side measurements with two canisters, affix the bar code label from the second canister on the same test information card in the space provided for side-by-side measurements. Do not affix second bar code label to same card if canisters are not placed side-by-side.

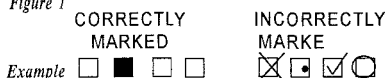
IMPORTANT: PLEASE KEEP A COPY OF THE BAR CODE NUMBER(S) FOR YOUR RECORDS.

4. Remove the canister's sealing label. Place the canister in the selected location.
5. Expose the opened canister(s) at the indicated site for 2 to 7 days. ANY exposure within this period will give an accurate Radon result for the indicated exposure period.

TO END TEST:

1. After 2 to 7 days, seal the perforated canister top with the resealing label which reads "Use This Label To Seal Perforated Side Of Canister".
2. Fill in the date and time that the test was stopped on the card (fill in AM or PM).
3. Place the canister and test information card back into the box.
4. For the most accurate results, mail the canister to RTCA the next business day. The canister must be received by RTCA within 10 days of stopping the test.

Figure 1



For Best Results Follow These EPA Protocols:

If you are conducting a radon test for a real estate transaction, the EPA recommends these short-term options.

Take **two** short-term tests **at the same time** in the **same location** for at least 48 Hours. Place canisters at least 20 inches above the floor and 4 inches apart on an exposed surface. (i.e. table, box or RTCA PROFESSIONAL TEST STAND).

OR

Take an initial short-term test for at least 48 hours. After the first test has been completed, take a follow-up short term test for at least 48 hours.

- If you are conducting a radon test that is **not** for a real estate transaction, Place canisters at least 20 inches above the floor on an exposed surface: (i.e. table, box, or the RTCA PROFESSIONAL TEST STAND).
- Place one canister in the lowest level of the home (i.e. basement). Place the second canister on the next higher level in a living area. Additional canisters should be placed in accordance with your individual testing strategy.
- Windows and doors should be kept closed as much as possible 12 hours before starting test and throughout the test period. Do not operate high volume attic and window fans during the test.
- Do not place canisters in drafts from ventilators, doors, windows, fireplaces, heating or air conditioner vents. Do not place canisters directly next to exterior house walls. Do not place on heat producing objects such as furnaces or televisions.
- Do not place canisters in a "still air" section of the room (such as inside drawers or cabinets). This will block the canisters from the normal air supply in the room.

CONDITIONS GOVERNING CONTRACT PERFORMANCE AND LIMITATION OF LIABILITY

CONTRACT PERFORMANCE: Seller shall not be responsible for nonperformance or delays in performance occasioned by any causes beyond Seller's reasonable control, including, but not limited to, labor difficulties, delays of vendors or carriers, fires, governmental actions and material shortages. Any delays occasioned shall effect a corresponding extension of Seller's performance dates which are, in any event, understood to be approximate. In no event shall Buyer be entitled to incidental or consequential damage for late performance or a failure to perform.

WARRANTY AND LIMITATION OF LIABILITY: Enviro Technology Corporation and RTCA does not accept any responsibility for financial or health consequences of subsequent actions taken by the client or its consultants as a result of any Radon Gas and/or associated progeny concentration measurement progeny concentration measurement program conducted by Enviro Technology Corporation and RTCA.

Seller warrants that any packaging or other services supplied by Seller and specifically purchased by Buyer shall be of a good quality and will be free from defects in material and workmanship. All claims for defective or non-conforming (both hereafter called defective) workmanship or materials under this warranty must be made in writing immediately upon discovery and, in any event within one (1) year after shipment. Defective items must be held for Seller's inspection and returned to the original F.O.B. point upon request. The foregoing is expressly in lieu of all other warranties whatsoever, express, implied and statutory including, without limitation, the implied warranties of merchantability and fitness.